

**LONDON
VICTORIA
GROUPS** 



Keybridge Tower, 1, Exchange Gardens

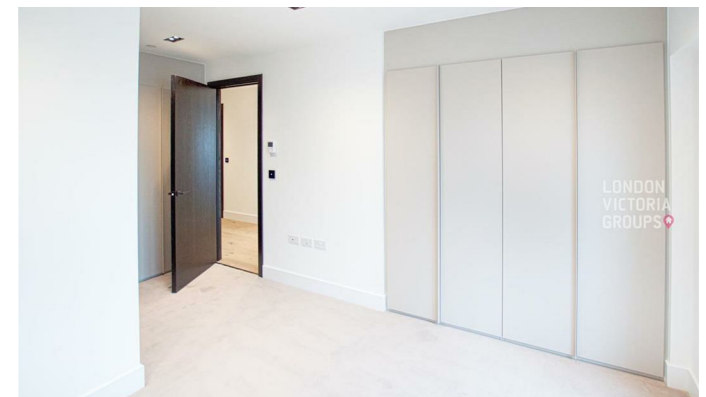
, London SW8 1BN

- A short walk from Vauxhall Station
- Swimming pool
- EPC-B
- On-site gym and spa facilities
- 24-hour concierge service
- CTB-F

£4,000 PCM



Local Authority **Lambeth**
 Council Tax Band **F**
 EPC Rating **B**



London Office Office
 Spaces Victoria, 25 Wilton Road, Pimlico,
 London, SW1V 1LW

Contact
 020 3084 3094
XL@londonvictoriagroups.co.uk
www.londonvictoriagroups.co.uk

Agents Note: Whilst every care has been taken to prepare these particulars, they are for guidance purposes only. All measurements are approximate and for general guidance purposes only and whilst every care has been taken to ensure accuracy, they should not be relied upon and potential buyers/tenants are advised to recheck the measurements.